

Integration BEGO Material Library in 3shape Dental System

| | |
|---------|-----------|
| Date | Juli 2023 |
| Version | 1.0 |

3Shape material library for use with STL export (open systems).

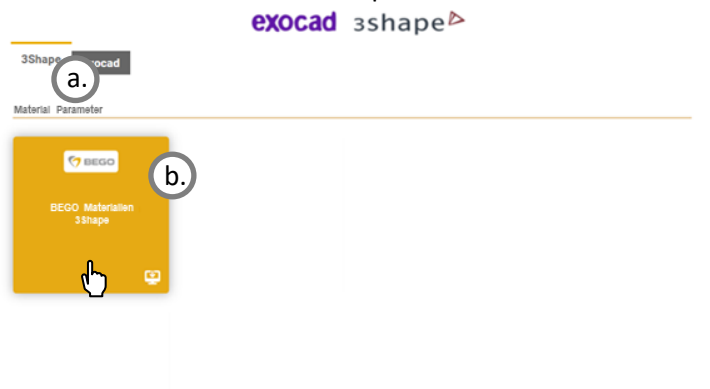
The downloaded material library will be imported using the **3Shape Dental System Control Panel**. It is recommended to backup the **"3Shape Configuration"** folder or the **"Manufacturers.3ml"** & **"Materials.xml"** files to a separate archive folder.

IMPORTANT NOTICE:

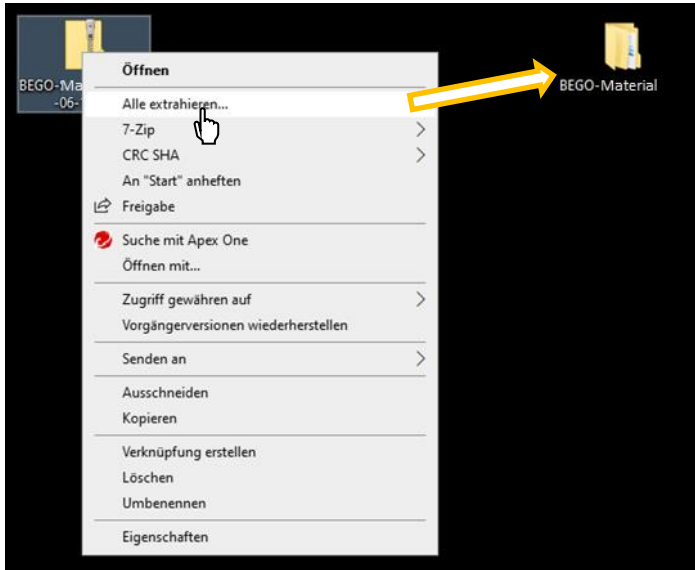
When importing the BEGO material file, same existing BEGO materials will be overwritten. If individual parameters have been adjusted for the materials, these will be lost. Therefore, please make a note or screenshots of possible individual settings before the import and change them again after the import has been completed successfully.

Step-by-step guide for integration of the library into 3Shape Dental System:

1. Select the corresponding 3Shape library (a.) and download the relevant implant system (b.) by clicking on the corresponding tab. The downloaded file should be located in the **"Downloads"** folder on the computer.



2. Extract the zip file of the downloaded material library.

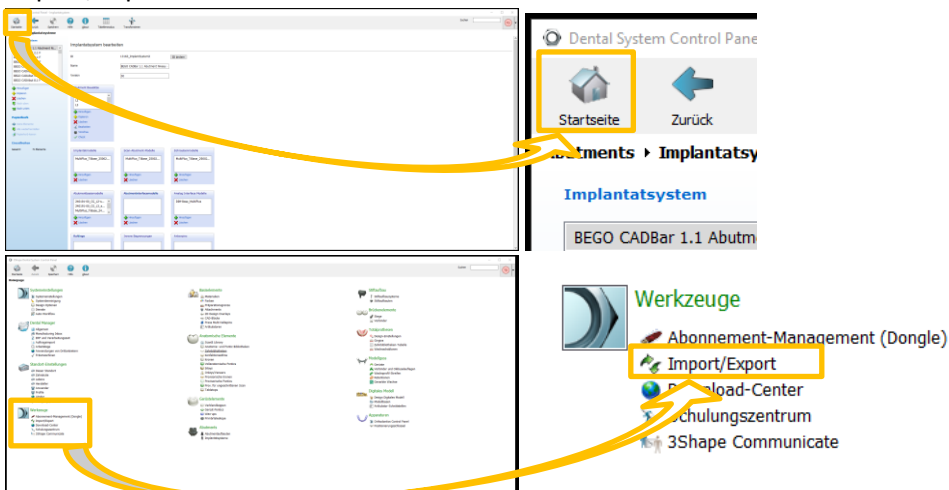


3. Open 3Shape Dental System Control Panel via the corresponding desktop shortcut.



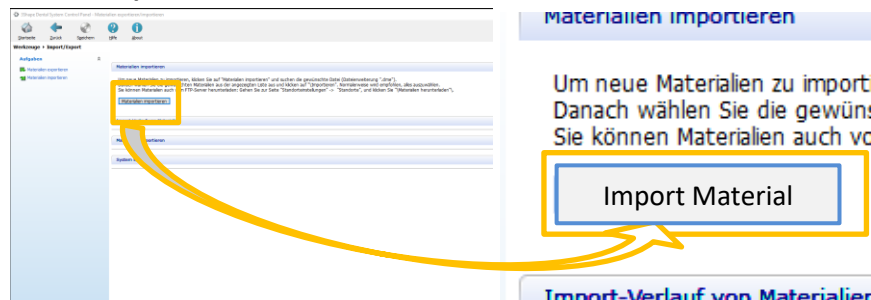
As an alternative, the "**ControlPanel.exe**" is located in the 3Shape installation directory
 ...\\3Shape\\Dental System Control Panel

4. Change to the starting page of 3Shape Dental System Control Panel and select the Import/Export tools.

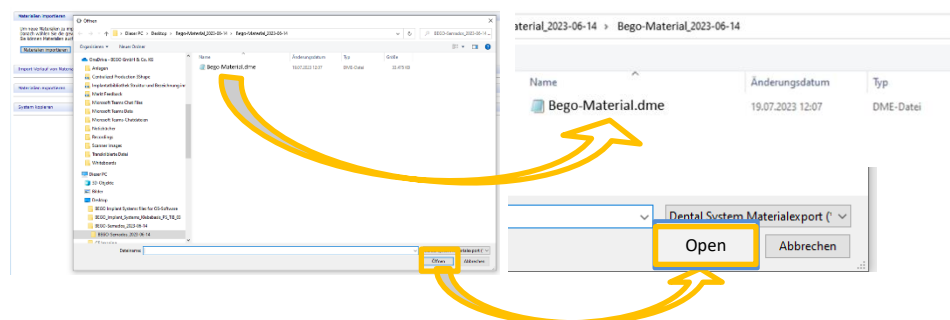


5. Click the Import Materials button and import the downloaded material library from the corresponding location.

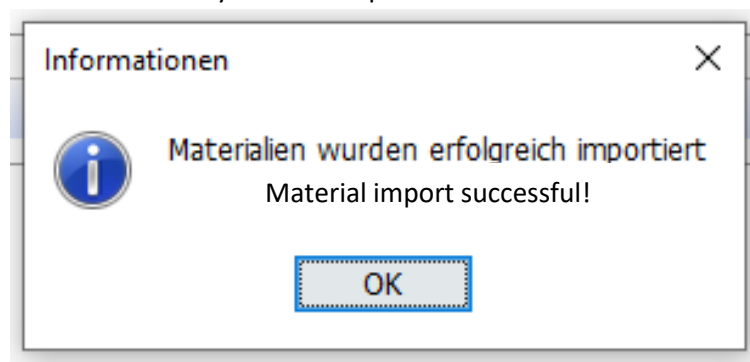
- a. Select **"Import Material"**



- b. Select the folder of the downloaded and unzipped material library and import the contained *.dme file.



ATTENTION: The import may take some time depending on the library size. You may receive an error message indicating that the system is no longer responding. In this case, please continue to wait. Once the import is complete, a corresponding pop-up window will notify that the import was successful.



6. Before closing the 3Shape Dental System Control Panel, be sure to save it.



7. The new integrated library is available for use after restarting **3Shape Dental System**.